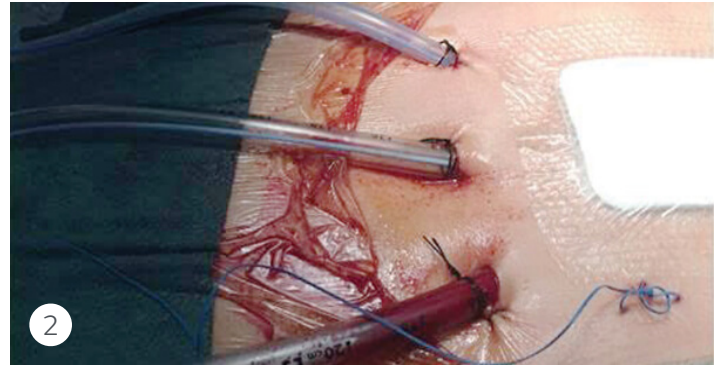


## Coronary artery bypass graft application



1 Remove the backing from the PICO dressing and apply over the incision. NOTE: ACTICOAT<sup>o</sup> FLEX may be applied in conjunction with PICO.\*

2 PICO may be used in conjunction with surgical drains provided the dressing is not placed over tubing where it exits the skin. Place dressing approximately 1 inch above the drains. Port position: uppermost from incision.



3 Connect the pump to the dressing by twisting the two halves of the connector together, insert the batteries and press the orange button to start therapy.

4 Assist the dressing to get good contact with the wound/skin by following the dressing with your hand while the pump is evacuating air from the dressing. Once the negative pressure has been successfully delivered, apply the fixation strips to the border of the dressing. The strips may be cut to make them easier to apply.

### Advanced Wound Management Customer Care Center

Smith+Nephew  
Fort Worth, TX 76109  
USA

T 800 876-1261  
F 727 392-6914

©2022 Smith+Nephew  
\*Trademark of Smith+Nephew  
737-5170-20221017

[www.possiblewithpico.com](http://www.possiblewithpico.com)

[www.smith-nephew.com](http://www.smith-nephew.com)



Watch Application Video

Smith+Nephew does not provide medical advice. It is the responsibility of clinicians to determine and utilize products and techniques appropriate for each of their individual patients. This is not the full application instructions, for more details please refer to the Instructions for Use (IFU). For detailed product information, including indications for use, contraindications, precautions and warnings, including the magnet warning, please consult the product's applicable IFU prior to use.

\*ACTICOAT FLEX 3 and ACTICOAT FLEX 7 are only approved for use with NPWT for up to 3 days.